

Poster presentation

Open Access

Towards metabolic networks phylogeny using Petri Net-based expansional analysis

Stefano Lanzeni*¹, Enza Messina¹ and Francesco Archetti^{1,2}

Address: ¹Department of Informatics, Systems and Communication, University of Milan-Bicocca, 20126 Milano, Italy and ²Consorzio Milano Ricerche, 20100 Milano, Italy

Email: Stefano Lanzeni* - stefano.lanzeni@disco.unimib.it

* Corresponding author

from BioSysBio 2007: Systems Biology, Bioinformatics and Synthetic Biology Manchester, UK. 11–13 January 2007

Published: 8 May 2007

BMC Systems Biology 2007, 1(Suppl 1):P17 doi:10.1186/1752-0509-1-S1-P17

This abstract is available from: <http://www.biomedcentral.com/1752-0509/1?issue=S1>

© 2007 Lanzeni et al; licensee BioMed Central Ltd.

Background

We propose a Petri Net-based method for metabolic networks profiling with respect to specific environmental conditions, based on the concept of metabolic reactions hierarchical ordering considered in [1]. One or more metabolites are seeded in the network, then the newly synthesized compounds are iteratively integrated in the system until no new compounds could be synthesized, breeding a process of metabolic network expansion. At each step t of the network expansional process the method identifies the subset of metabolites $s(t)$, also called "scope", that could be synthesized from the compounds available in the step $t-1$. The size $|s(t)|$ of each set $s(t)$ could be used to derive absolute and relative expansion process profiles, describing both the total number of compounds progressively incorporated and the number of new compounds synthesized in each algorithm step t .

Results

The absolute profiles of the expansion processes obtained seeding glucose as nutrient in the metabolic networks of red blood cells, *Escherichia coli*, *Mannheimia succiniciproducens*, *Helicobacter pylori*, *Saccaromyces cerevisiae* and *Staphylococcus aureus* are depicted in Figure 1. The qualitative trend is similar in all the metabolisms, with the exception of red blood cells network. Profiles are characterized by a rapid incorporation of compounds in the first iterations, while in the terminal steps the size of the metabolite sub-

set reaches a saturation, since unavailable factors are required for the synthesis of novel compounds.

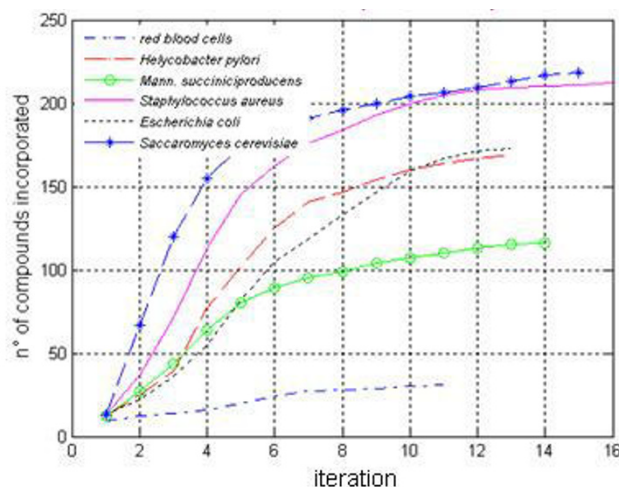


Figure 1

Absolute profiles of the expansion process obtained seeding glucose and co-factors. On the x-axis we report the generations (steps of the algorithm), whereas on the y-axis we report the cumulative number of the biochemical compounds incorporated.

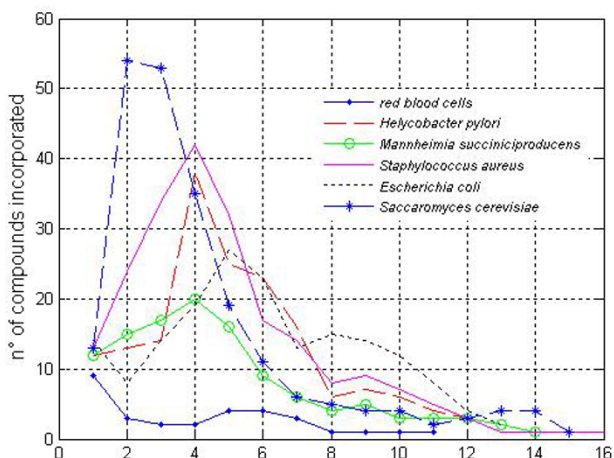


Figure 2
Relative profiles of the expansion process obtained seeding glucose.

The relative profiles of the same expansion processes, depicted in Figure 2, show the relevance of each algorithm step, allowing the identification of those steps in which a large number of compounds are synthesized. This is possible thanks to the incorporation of compounds called "metabolic hubs".

Conclusion

Since natural selection acts on every structural entity of life, as it has been proven from genomic and proteomic sequences analyses, it is plausible to suppose that biological networks' structure is selected through evolution, and we prospect phylogeny approaches based on networks comparisons. In this direction the definition of a similarity metric between metabolisms based on the symmetric version of the Kullback-Leibler distance among probability distributions, applied on the profiles obtained using the method here proposed, is a promising research topic.

References

1. Handorf T, Ebenhoh O, Heinrich R: **Expanding Metabolic Networks: Scopes of Compounds, Robustness and Evolution.** *J Mol Evol* 2005, **61**(4):498-512.

Publish with **BioMed Central** and every scientist can read your work free of charge

"BioMed Central will be the most significant development for disseminating the results of biomedical research in our lifetime."
Sir Paul Nurse, Cancer Research UK

Your research papers will be:

- available free of charge to the entire biomedical community
- peer reviewed and published immediately upon acceptance
- cited in PubMed and archived on PubMed Central
- yours — you keep the copyright

Submit your manuscript here:
http://www.biomedcentral.com/info/publishing_adv.asp

